

SCREEN COMBINATION FEATURE IN HATS 7.0

This white paper provides details regarding screen combination feature in HATS 7.0.

What is Screen combination in HATS 7.0?

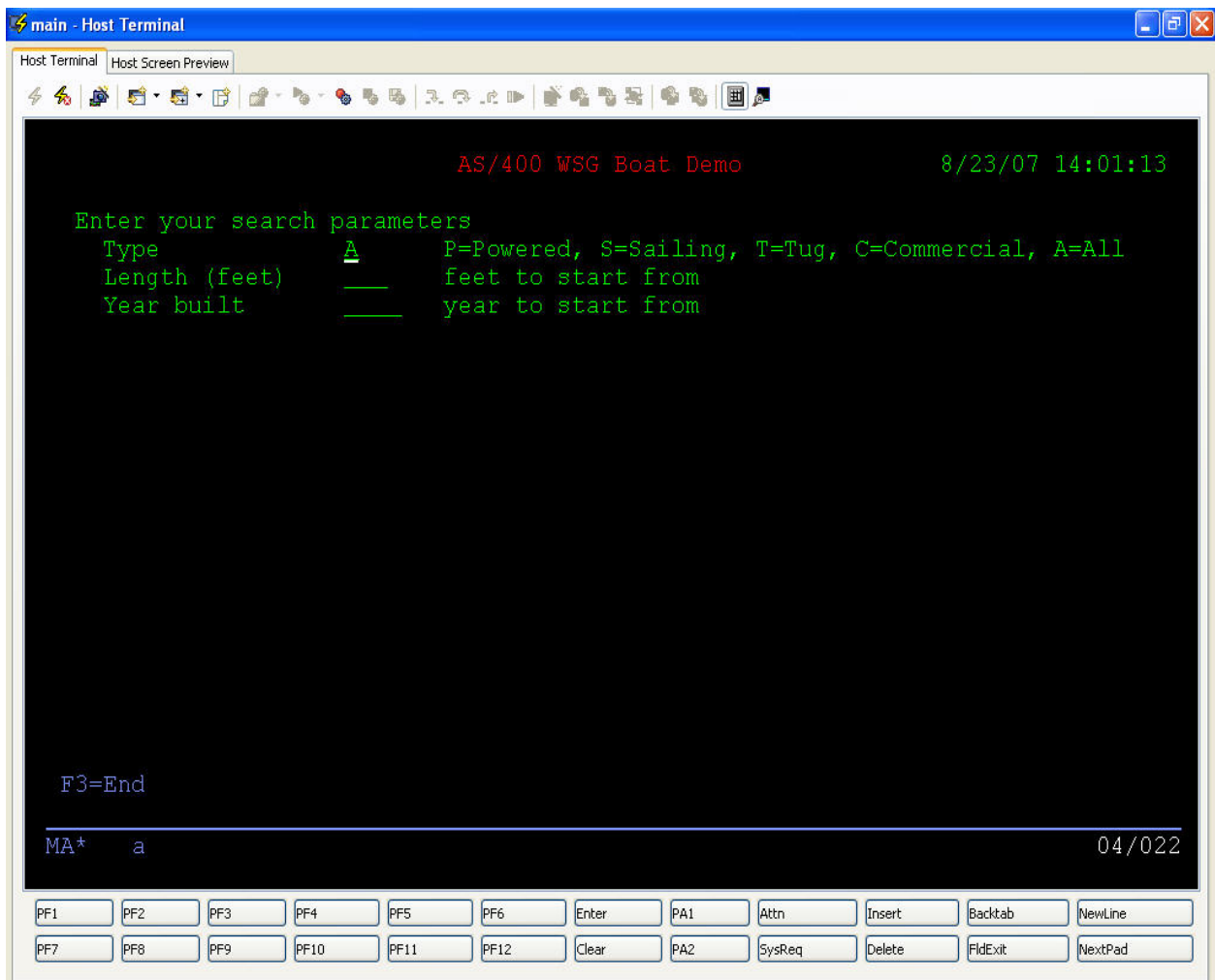
HATS 7.0 can combine together multiple similar consecutive host screens in a single output page using Screen Combination feature. An example of a screen combination includes recognizing a screen that contains only partial information and navigating through all subsequent similar screens to gather all of the remaining data to display in a single output screen.

The Screen combination wizard comprises a set of screen recognition criteria for both the beginning and ending screens to be combined, navigation methods, component and widgets to use to recognize and render the data gathered from each screen.

How to combine multiple similar host Output Screens in a single output page?

Let's discuss in some details how to combine multiple similar host screens, here we will be using Boats application on IBM test server 'seriesd.dfw.ibm.com'.

- Create a simple HATS 7.0 Enterprise Application project using default rendering settings.
- Open HATS host terminal
- Login to IBM host server and type 'BOATS' at command prompt.
- **AS/400 WSG Boat Demo** Screen will be appeared as shown below,



- Press **Enter**, compliance data will be populated as given parameters on the screen,
- Capture the host screen using '*Create Screen Capture*' icon with default name

The screenshot shows a terminal window titled 'Host Terminal' and 'Host Screen Preview'. The terminal content is as follows:

```

AS/400 WSG Boat Demo                               8/23/07 14:02:33

Your search parameters
Type          A      P=Powered, S=Sailing, T=Tug, C=Commercial, A=All
Length (feet)
Year built

1=Details
Type and Model

_ C Poole Boat Co Alumini
_ C Schmuzin 745
_ P Mako Sportfisher
_ P Carver Santa Cruz
_ P Monk Flybridge/Sedan
_ P Monk Bridgedeck Cru
_ P Monterey Marine Cust
_ P Webersnk Cruiser
_ S Corsair 27
_ S Hunter 33.5

F3=End  F12=New search

MA*  a
  
```

Overlaid on the terminal is a 'Capture a Screen' dialog box. The dialog box contains the following text and fields:

Capture a Screen

Enter a name and select a location for this new captured screen.

Name:

Select destination location:

Buttons: Finish, Cancel

At the bottom of the terminal window, there is a keyboard layout with buttons for PF1 through PF12, Enter, PA1, PA2, SysReq, Clear, Delete, FldExit, NextPad, Insert, backtab, and NewLine.

- Press page **down**, and capture the next consecutive screen,

The screenshot shows a terminal window titled "Host Terminal" and "Host Screen Preview". The terminal content is as follows:

```

AS/400 WSG Boat Demo                               8/23/07 14:04:37

Your search parameters
Type           A           P=P
Length (feet)  fee
Year built     yea

1=Details
  Type and Model

- S Bill Garden Schooner                27,500
- S Fountaine Pajot Antigua             179,500
- S Morgan 382 Race/Cruise              69,000
- S Mariner Ketch                       63,000
- S Nauticat 40                          179,000
- S Seafinn 411 Motorsailer             269,500
- S Brandlmayr 48                       149,000
- S Shannon 50 ketch                    80,000
- S Garden Design Porpoise              450,000
- S Merlin's Magic

F3=End  F12=New search

MA*  a
  
```

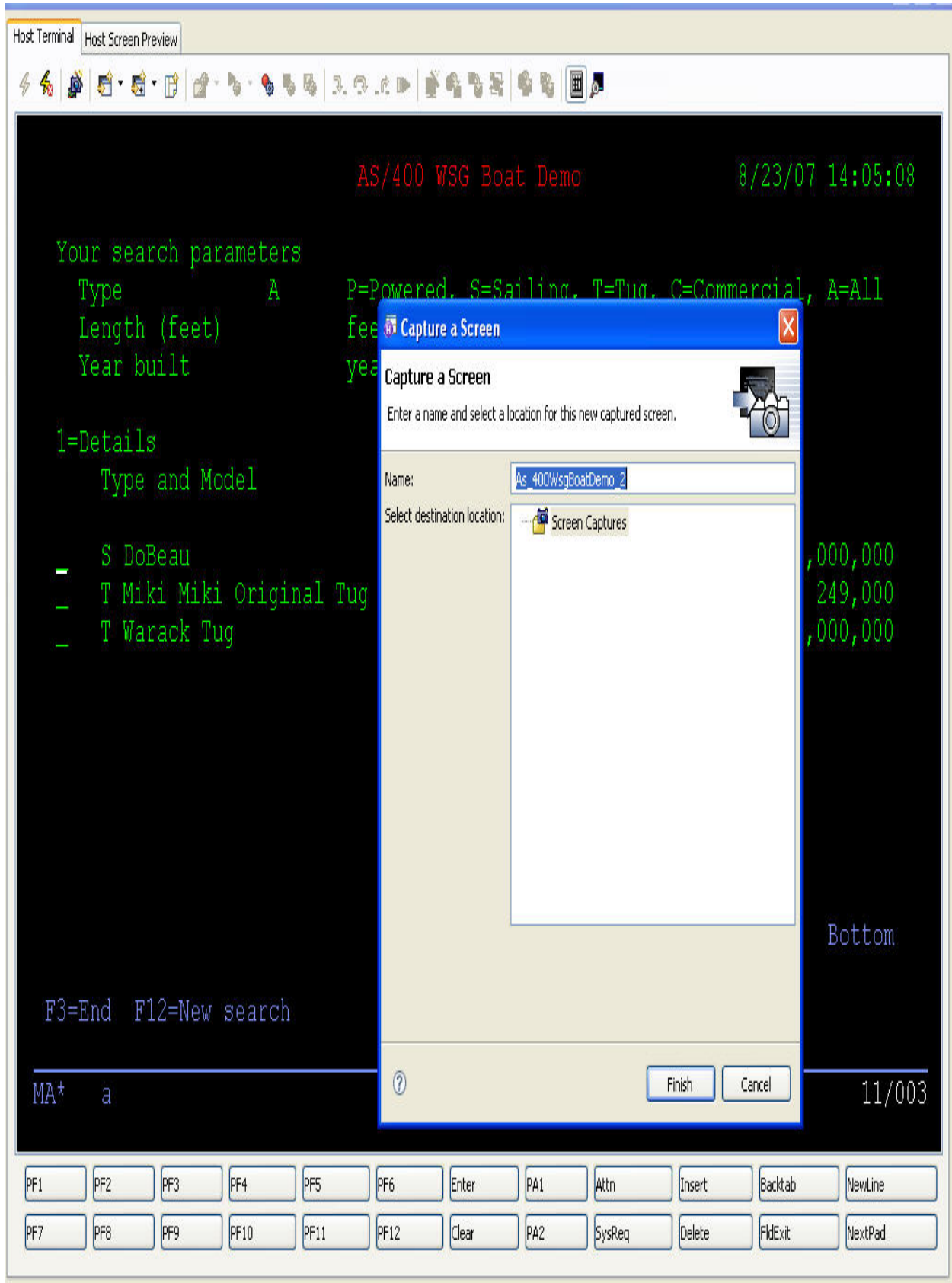
The "Capture a Screen" dialog box is open, showing the following fields:

- Name:
- Select destination location:

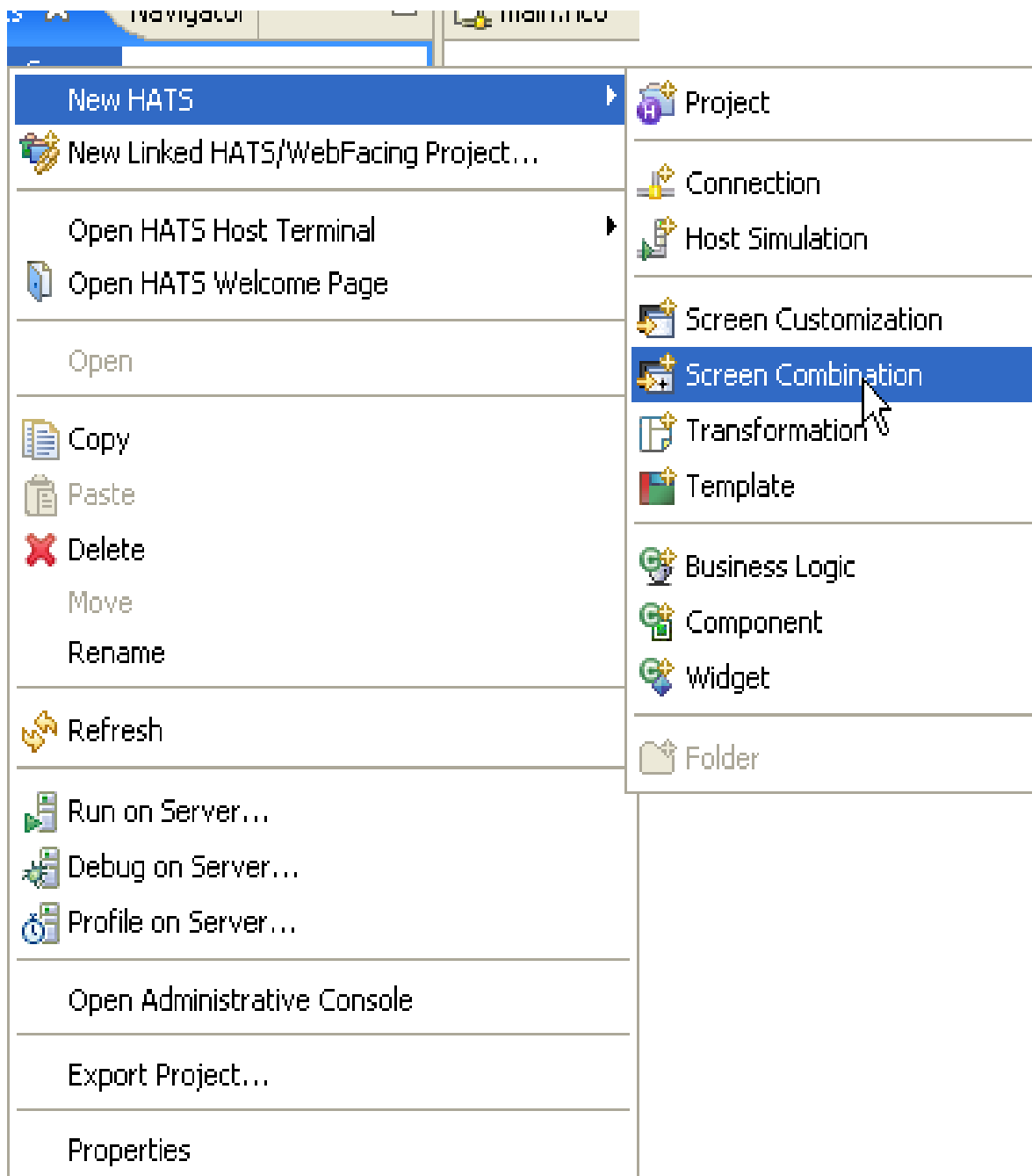
Buttons at the bottom of the dialog are "Finish" and "Cancel".

At the bottom of the terminal window, there is a keyboard layout with buttons for PF1 through PF12, Enter, PA1, Attn, Insert, Backtab, NewLine, Clear, PA2, SysReq, Delete, FldExit, and NextPad.

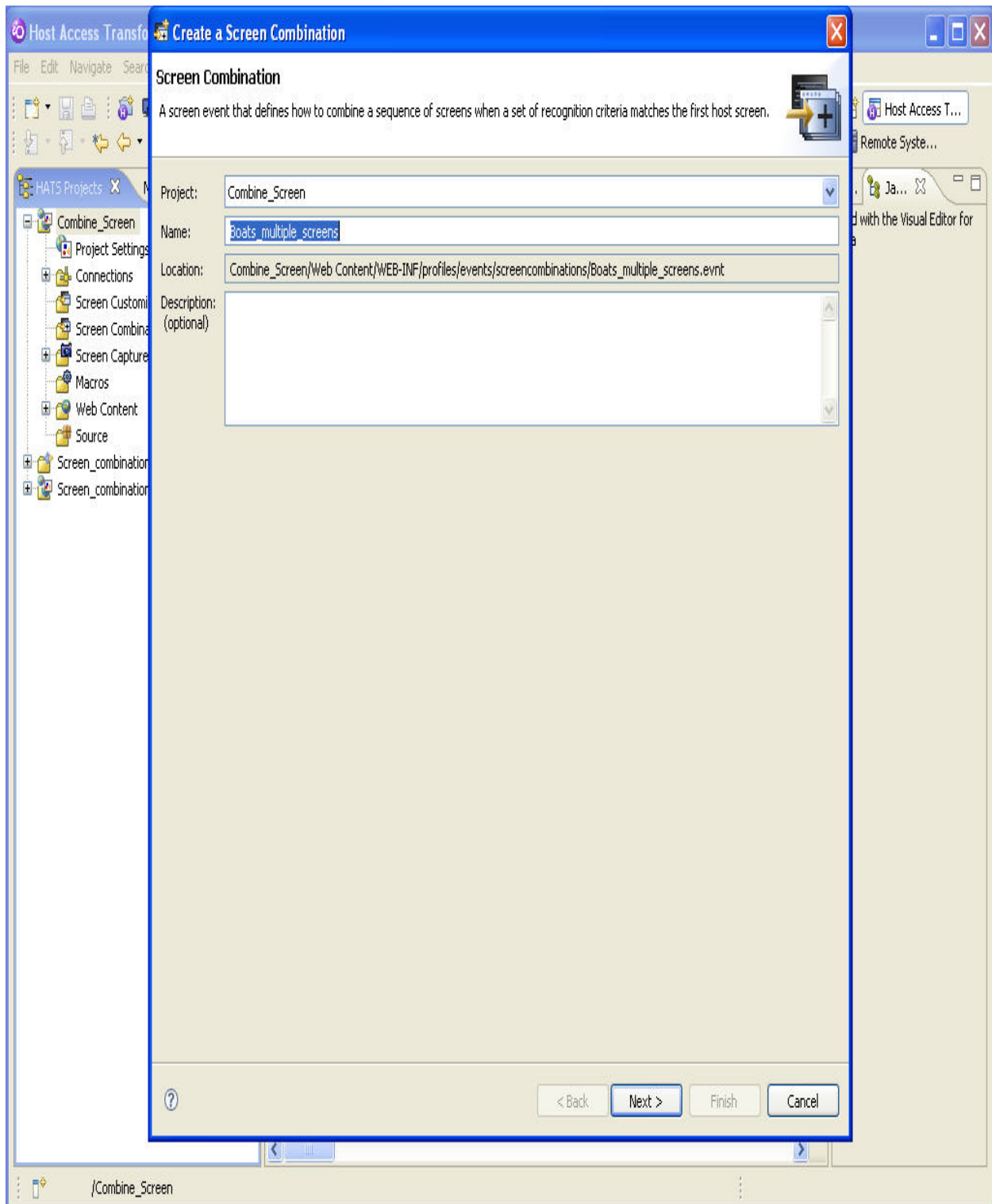
- Again press **page down** and similarly capture the third screen,



- Press **F3** and logoff from the application.
- Select the application in the HATS project menu, and right click to start wizard by selecting **NEW HATS > Screen Combination**



- On *Create a Screen Combinations Screen*, type Name of the project as, **Boats_multiple_Screens**
- Press **Next**



- At *Begin Screen Recognition Criteria* Screen, Select *'use a previously captured screen'* radio button and select screen as *'AS_400WsgBoatDemo'*
- Select the unique screen recognition criteria as shown below,

Begin Screen Recognition Criteria

Specify how to identify the first screen. You can make the criteria more or less specific in order to match one or many screens. You can add additional criteria in the screen combination editor.

Select a screen source:

- Use the host terminal screen
- Use a previously captured screen

Screen:

Preview:

```

AS/400 WSG Boat Demo 8/23/07 14:02:33
Your search parameters
Type A P=Powered, S=Sailing, T=Tug, C=Commercial, A=All
Length (feet) feet to start from
Year built year to start from
23 boats match your search
1=Details
Type and Model Feet Year US$
C Poole Boat Co Aluminum 80 1979 1,000,000
C Schaurzin 745 745 2000 82,000,000
P Mako Sportfisher 19 1989 13,000
P Carver Santa Cruz 28 1978 23,900
P Monk Flybridge/Sedan 34 1985 55,000
P Monk Bridgedeck Cruiser 36 1956 19,900
P Monterey Marine Custom 80 1996 2,975,000
P Webersnk Cruiser 310 2000
S Corsair 27 27 1994 69,950
  
```

String position:

- Anywhere on the screen
- At a specified position: Row Column
- Within a rectangular region: Start row Start column End row End column

Total number of fields:

Number of input fields:

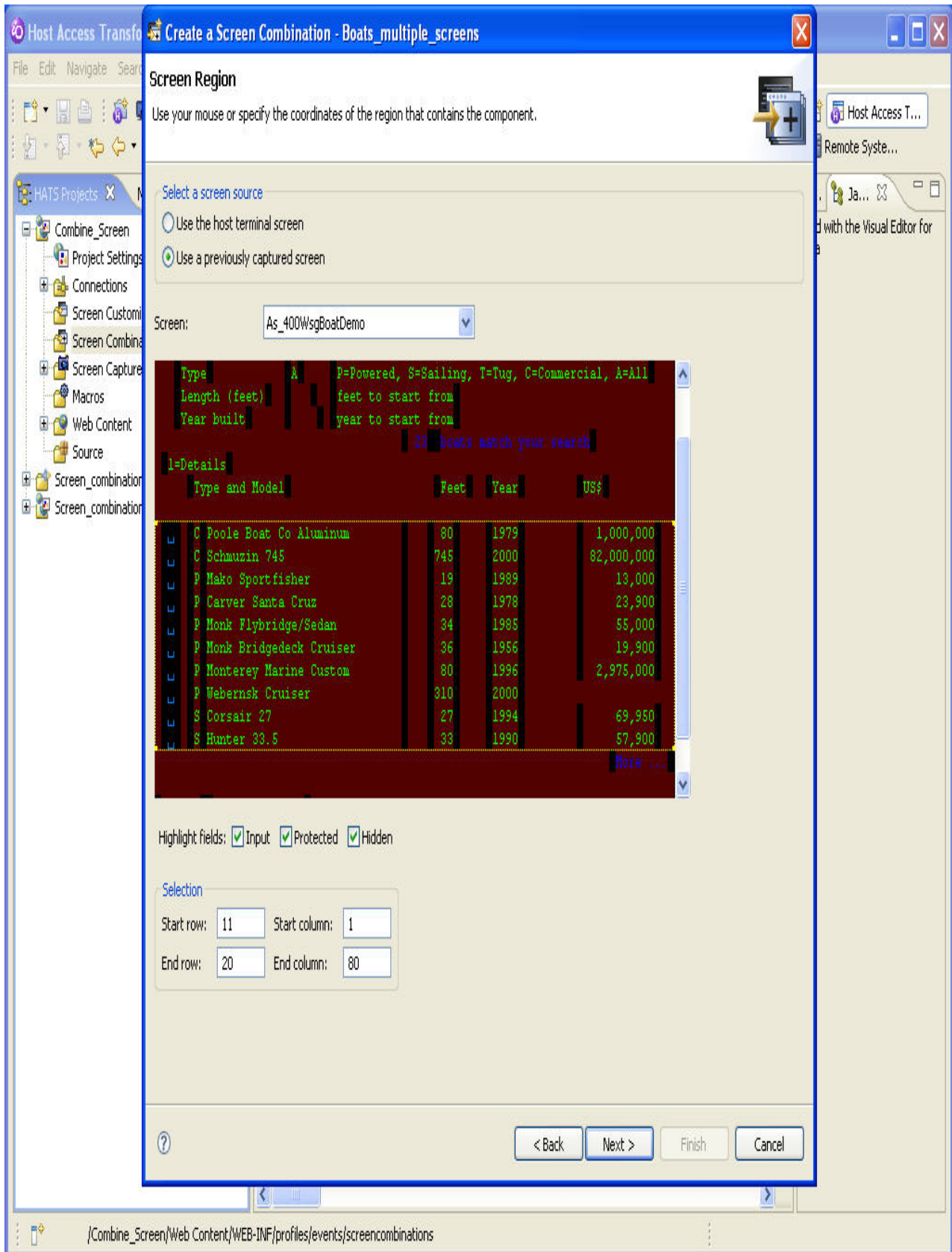
Cursor position: Row Column

Strings:

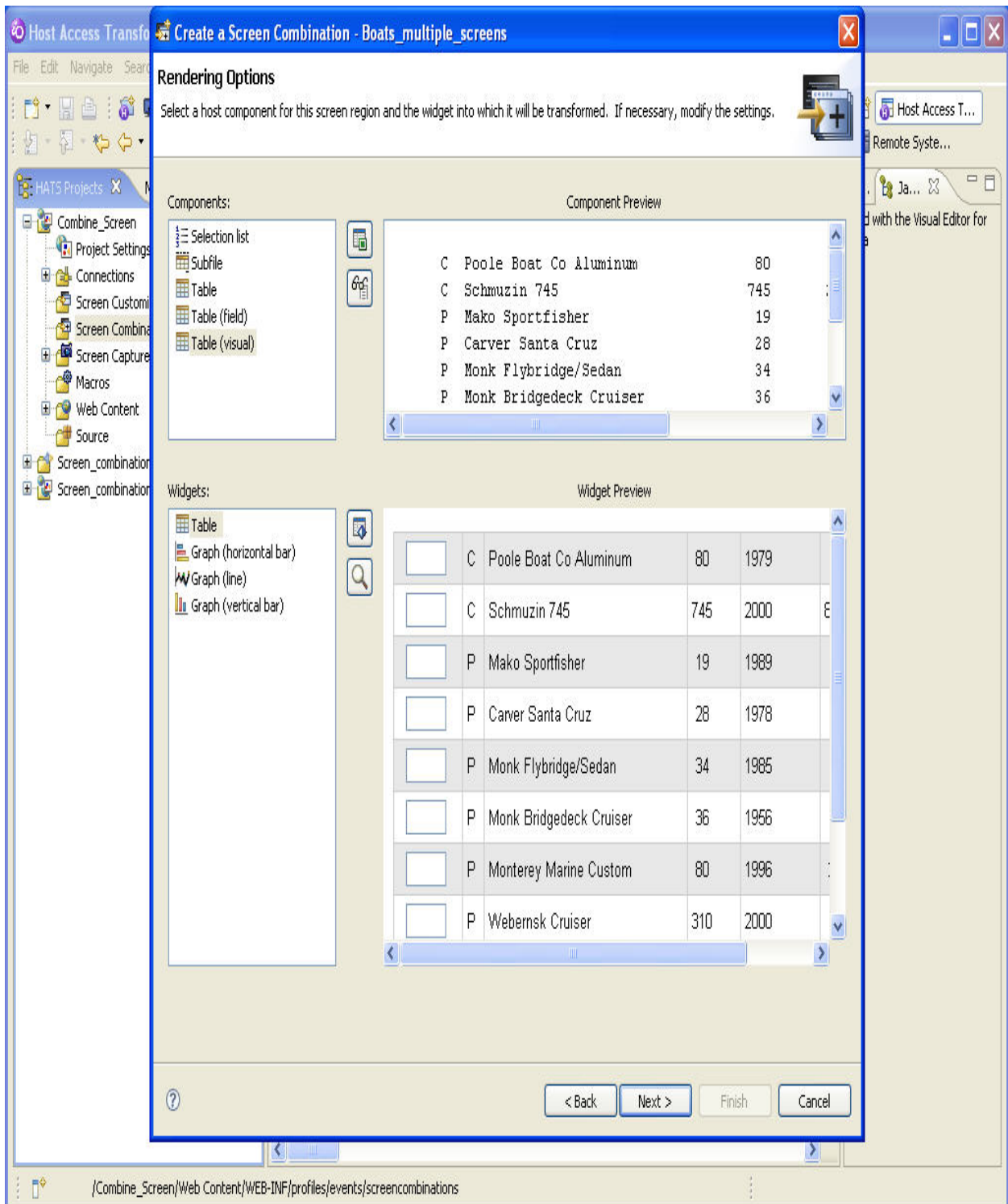
Highlight fields: Input Protected Hidden

/Combine_Screen/Web Content/WEB-INF/profiles/events/screencombinations

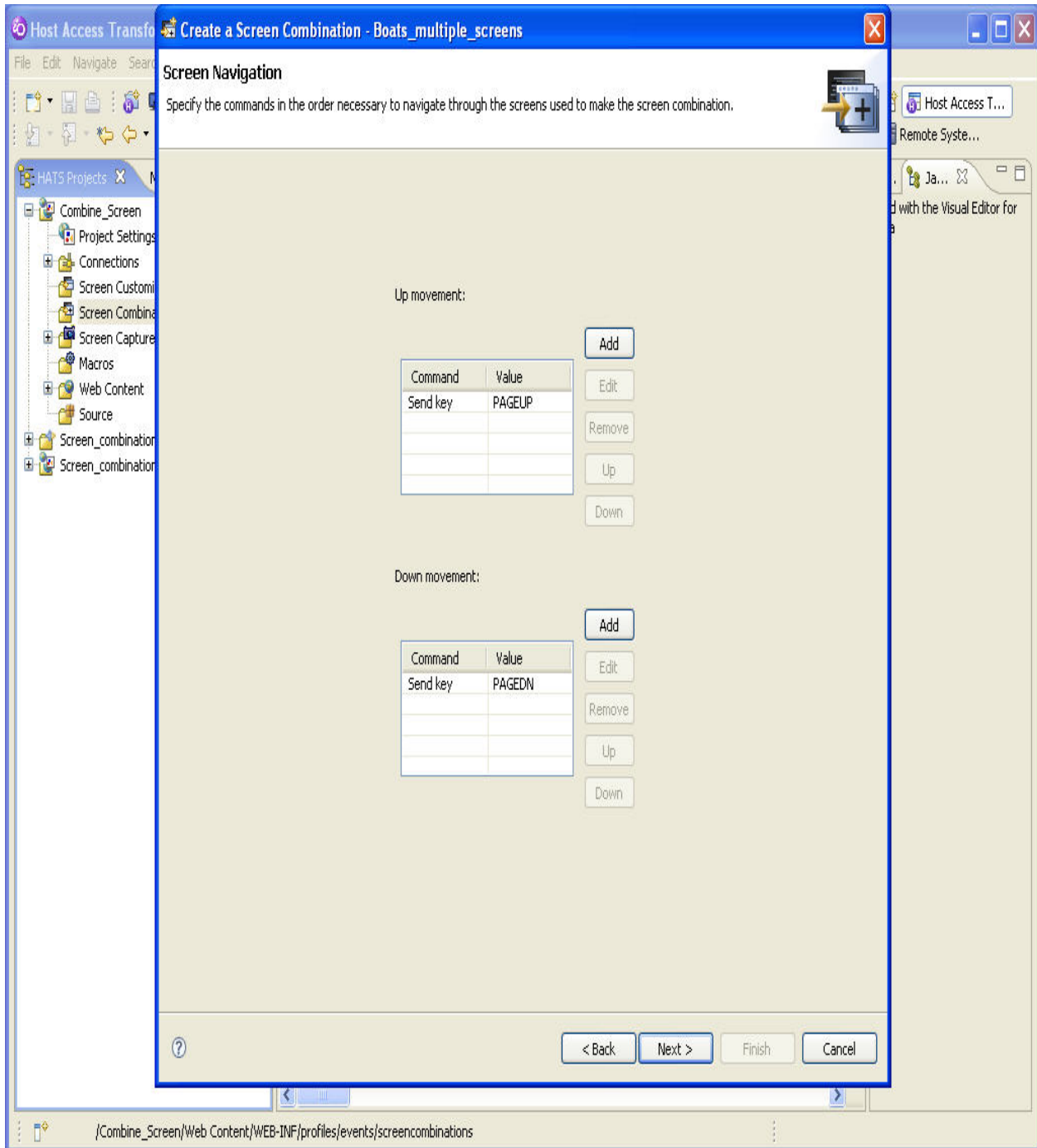
- Press **Next**.
- At *Screen Region* screen, similarly select *'Use a previously captured screen'* radio button and select *'AS_400WsgBoatDemo'* screen, select the screen data area to display,



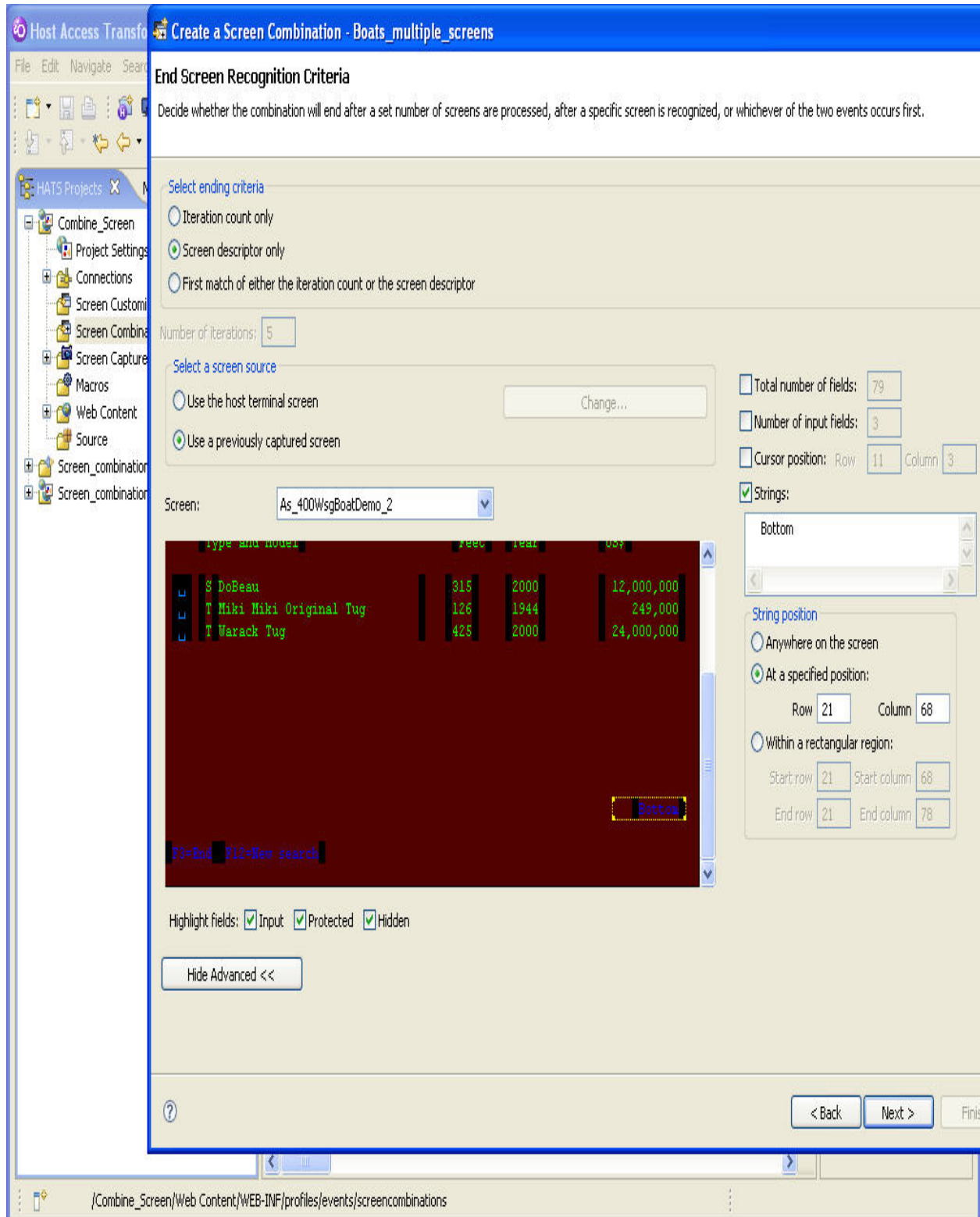
- Press **Next**
- At *Rendering Option*, select **Table(visual)** Components,



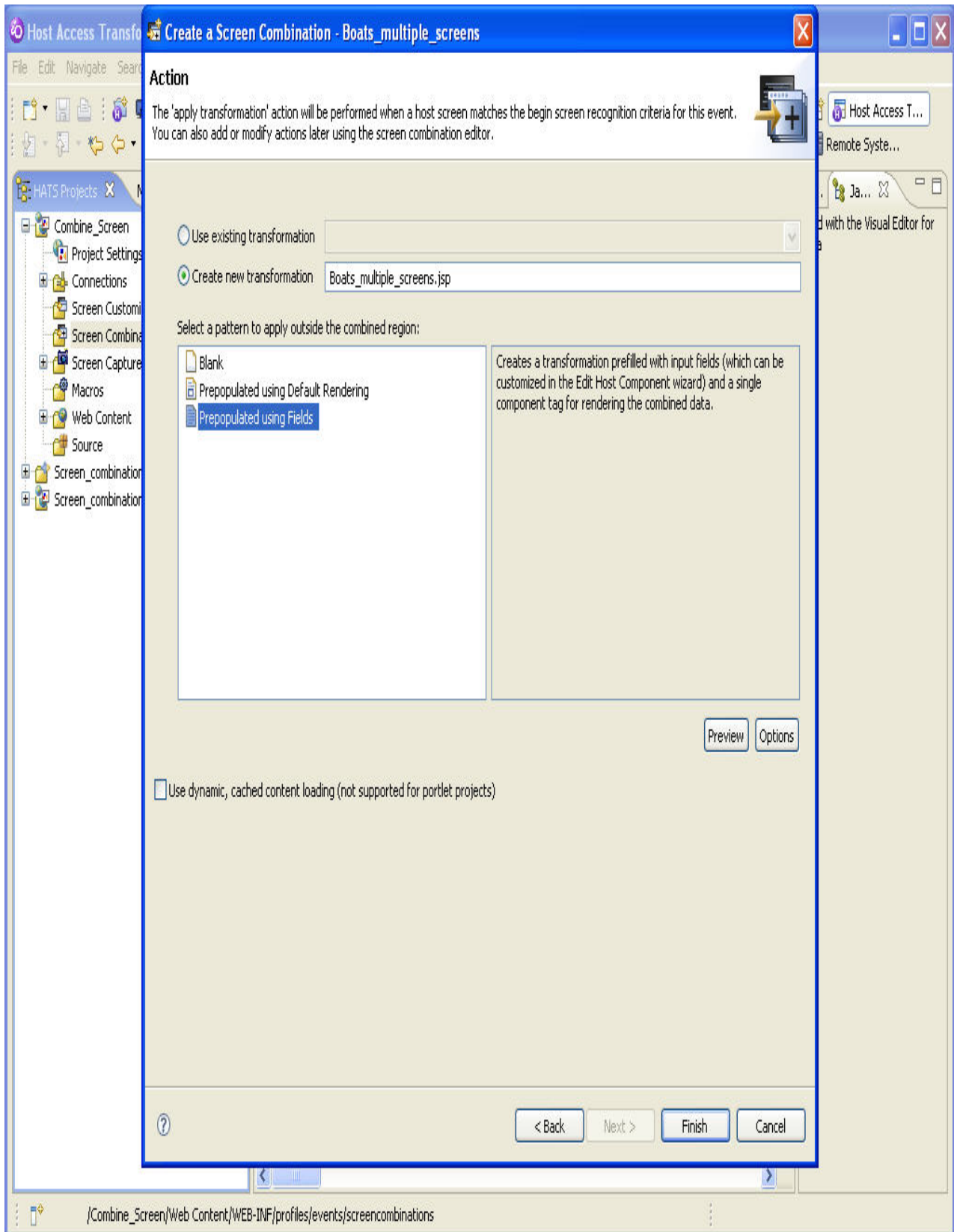
- Press **Next**.
- At *Screen Navigation* Screen, select the default **up movement** and **Down movement** Commands.



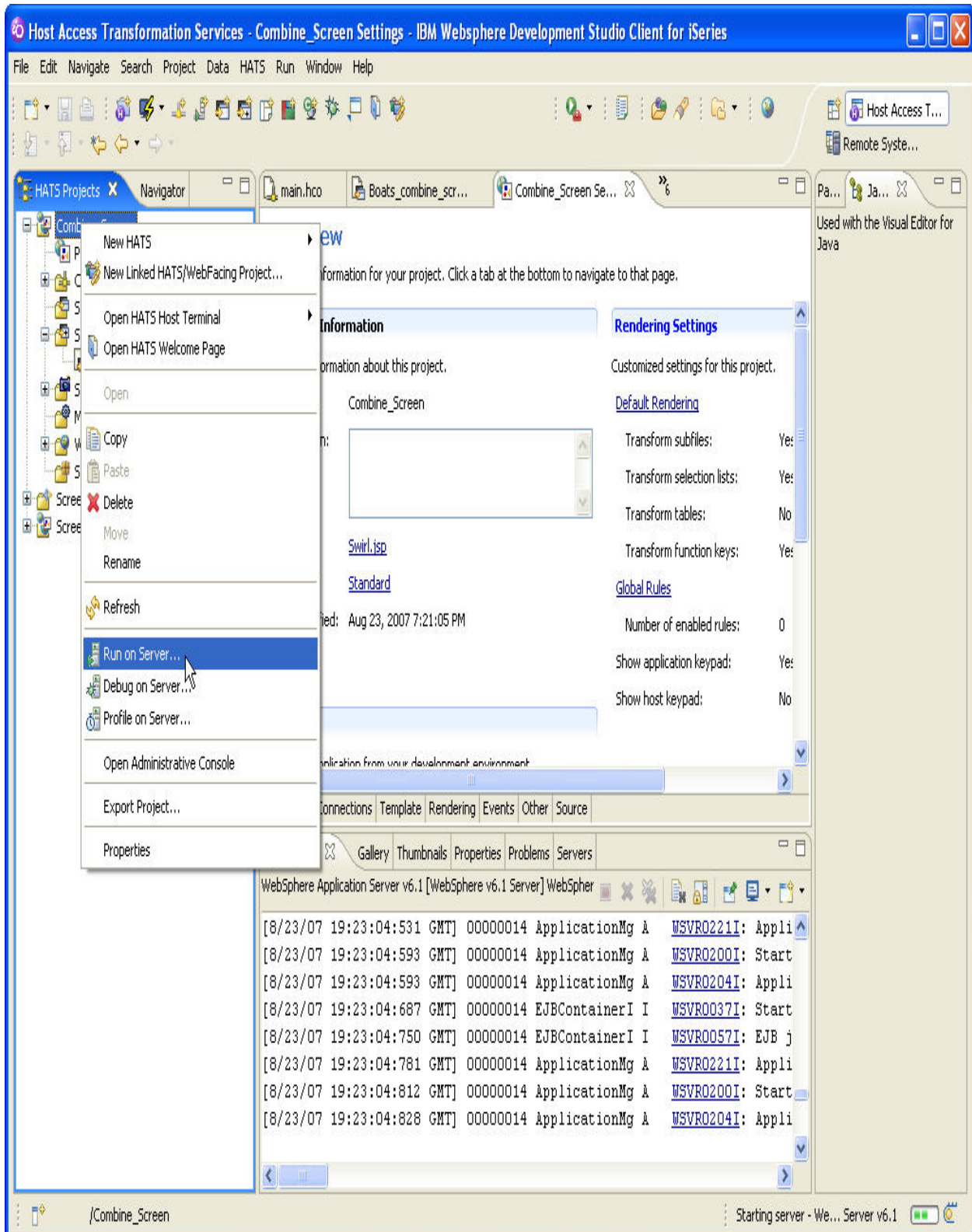
- Press **Next**
- At *End Screen Recognition Criteria* screen, select ‘Screen descriptor’ only radio button
- Select ‘Use a previously captured screen’ radio button and select ‘AS_400WsgBoatDem_2’ screen.
- Select ‘Bottom’ region text as end of data



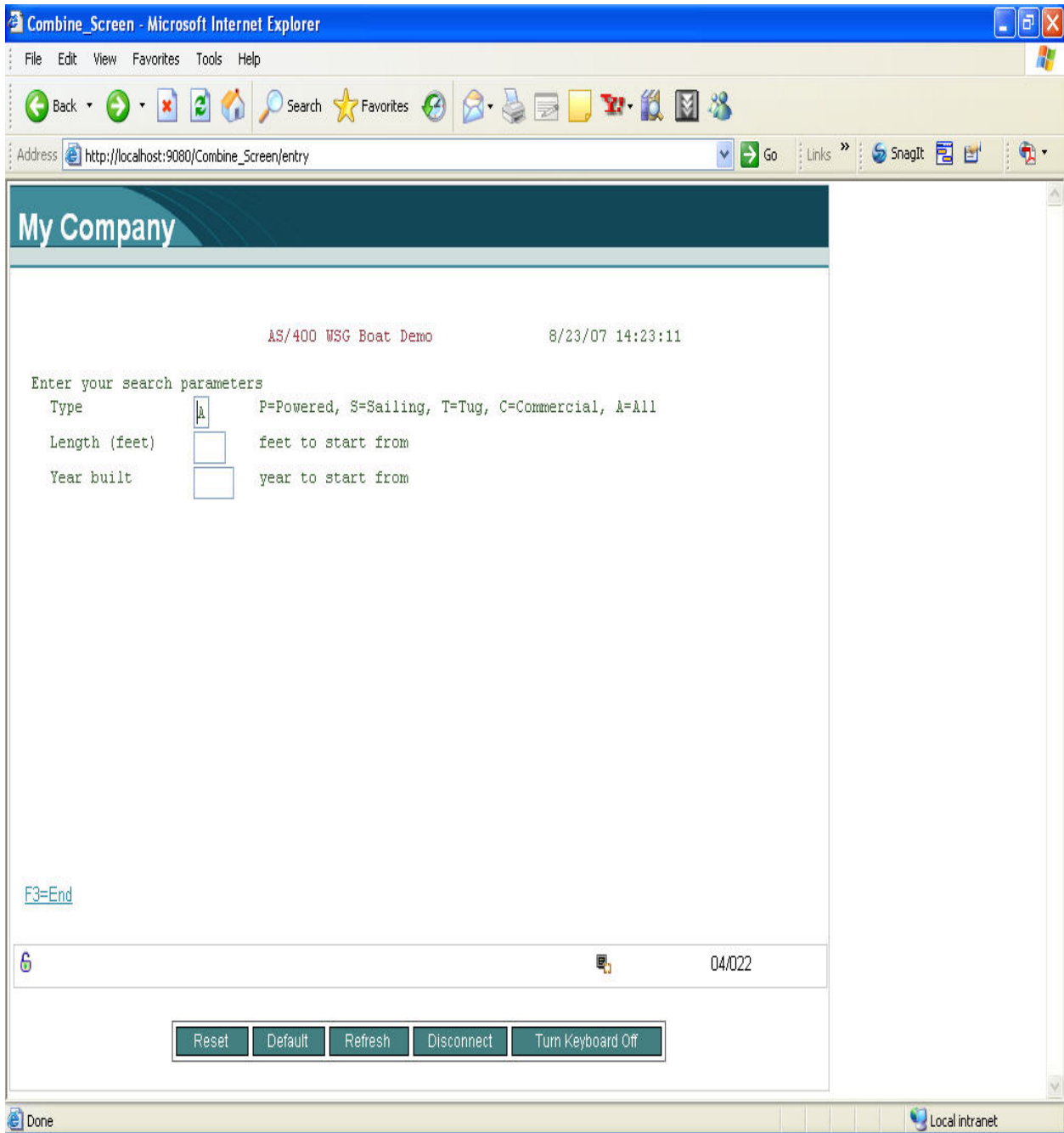
- Press **Next**
- At *Action* Screen, Choose '**Populated using fields**' option



- Press **Finish** to end the wizard.
- Start the server and right click on the application and choose the '**Run on Server**' option to execute the application.



- Login to the IBM test server and Enter 'Boats' at Command prompt
- Press **Enter**





© Copyright IBM Corporation 2010
IBM Global Services
Route 100
Somers, NY 10589
U.S.A.
Produced in the United States of America
08-10
All Rights Reserved

IBM, the IBM logo, ibm.com, Lotus®, Rational®, Tivoli®, DB2® and WebSphere® are trademarks or registered trademarks of International Business Machines Corporation in the United States, other countries, or both. If these and other IBM trademarked terms are marked on their first occurrence in this information with a trademark symbol (® or ™), these symbols indicate U.S. registered or common law trademarks owned by IBM at the time this information was published. Such trademarks may also be registered or common law trademarks in other countries. A current list of IBM trademarks is available on the Web at "Copyright and trademark information" at ibm.com/legal/copytrade.shtml Other company, product and service names may be trademarks or service marks of others. The information contained in this documentation is provided for informational purposes only. While efforts were made to verify the completeness and accuracy of the information contained in this documentation, it is provided "as is" without warranty of any kind, express or implied. In addition, this information is based on IBM's current product plans and strategy, which are subject to change by IBM without notice. IBM shall not be responsible for any damages arising out of the use of, or otherwise related to, this documentation or any other documentation. Nothing contained in this documentation is intended to, nor shall have the effect of, creating any warranties or representations from IBM (or its suppliers or licensors), or altering the terms and conditions of the applicable license agreement governing the use of IBM software. This document illustrates how one organization uses IBM products. Many factors have contributed to the results and benefits described; IBM does not guarantee comparable results elsewhere.